



Monteith Park and View Park Green Alley  
Stormwater Improvements Project

Information Session

4/14/2023 11:00 AM-12:00 PM

# MONTEITH PARK AND VIEW PARK GREEN ALLEY STORMWATER IMPROVEMENTS PROJECT

## Overview

- Project Benefits
- Project Goals
- Project Scope
- Project Budget & Schedule
- Project Information Resources

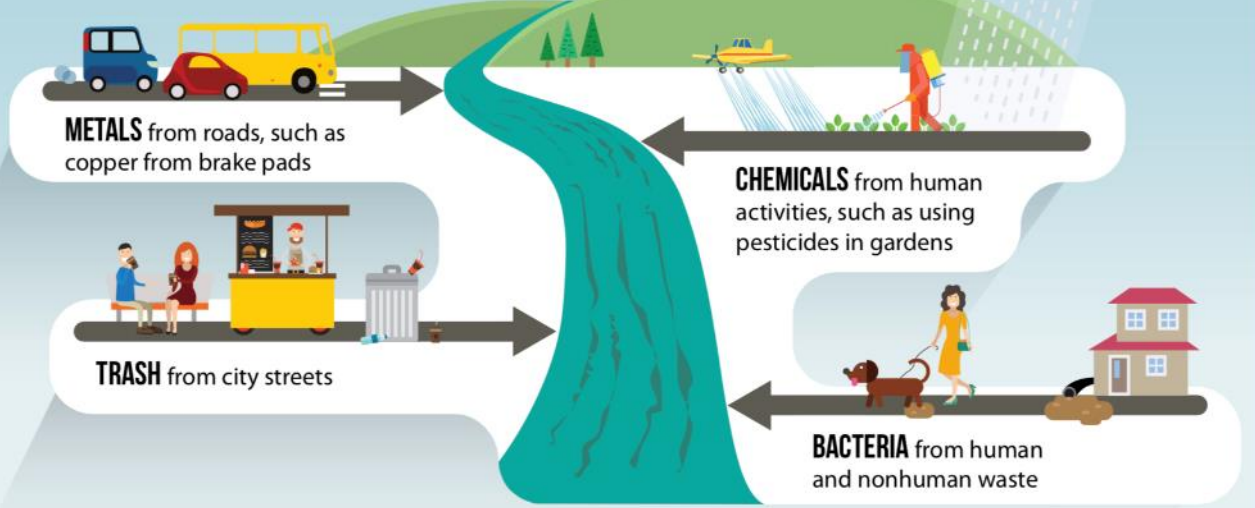


# MONTEITH PARK AND VIEW PARK GREEN ALLEY STORMWATER IMPROVEMENTS PROJECT

Water from rain, melting snow, and other sources washes pollutants into storm drains, which deposit the pollutants into water bodies such as the ocean and lakes.

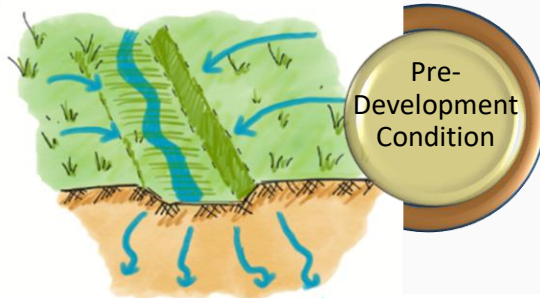
Pollutants include:

## Protecting our Waterways



# MONTEITH PARK AND VIEW PARK GREEN ALLEY STORMWATER IMPROVEMENTS PROJECT

## Strategies – Capturing Stormwater



# MONTEITH PARK AND VIEW PARK GREEN ALLEY STORMWATER IMPROVEMENTS PROJECT

## Project Benefits

- Water Quality
- Water Conservation
- Community Enhancements
- Environment



# MONTEITH PARK AND VIEW PARK GREEN ALLEY STORMWATER IMPROVEMENTS PROJECT

## Drainage Area



- Monteith Park:
  - 188 acre drainage area
- View Park Green Alley:
  - 40 acre drainage area
- Total:
  - 228 acres

# MONTEITH PARK AND VIEW PARK GREEN ALLEY STORMWATER IMPROVEMENTS PROJECT

## Monteith Park Information

- Location: Unincorporated County Area of View Park
- Ownership: Owned and Operated by County of LA Department of Parks and Recreations
- Park Area:  $\approx$  26,000 SF



# Site Overview



- 2 Pre-Treatment Systems
- 13 Dry Wells



# Above Ground Concept

## MONTEITH PARK AND VIEW PARK GREEN ALLEY



- CONCRETE MOW CURB
- EXISTING TREE TO REMAIN
- VARIETY OF TREE SPECIES FOR SHADE, HABITAT, AND FLOWERING INTEREST
- NATURAL GRAY CONCRETE SEAT WALL
- COLORLED CONCRETE PAVING
- COLORLED CONCRETE PAVING
- DROUGHT TOLERANT, NATIVE, AND POLLINATOR/BIRD FRIENDLY LANDSCAPE PLANTING: SHRUBS, GRASSES, SUCCULENTS, AND GROUND COVER
- ROCK COBBLE BIOSWALE
- CONCRETE STEP-OUT
- NEW TURF

- PARK MONUMENT SIGN WITH DECORATIVE ROCK BOULDERS
- NEW CONCRETE BENCH, WADA COMPANION SEATING
- NEW TRASH RECEPTACLE
- NEW CONCRETE PICNIC TABLE
- INTERPRETIVE SIGN
- EXISTING BENCH TO REMAIN
- EXISTING TRASH RECEPTACLE TO REMAIN
- NEW ADA DRINKING FOUNTAIN
- NEW ADA PICNIC TABLE



# MONTEITH PARK AND VIEW PARK GREEN ALLEY STORMWATER IMPROVEMENTS PROJECT



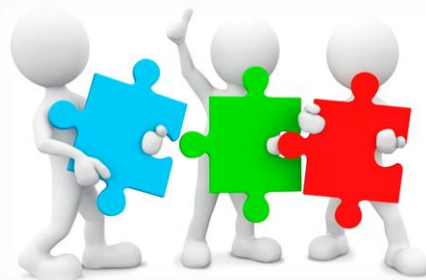
# MONTEITH PARK AND VIEW PARK GREEN ALLEY STORMWATER IMPROVEMENTS PROJECT

## Cost

- Estimated Project Construction Cost: \$7.3M
- Funding Sources:
  - Prop 12 SMBRC, Prop 1 IRWM, and SCW

## Project Status

- Design Completed - Oct 2022
- Begin Construction - Fall 2023
- Complete Construction - Fall 2024



# MONTEITH PARK AND VIEW PARK GREEN ALLEY STORMWATER IMPROVEMENTS PROJECT



**FOR REGULAR PROJECT UPDATES & CONTACT INFORMATION:**

<http://dpw.lacounty.gov/go/Monteith>

Web Search Keyword Phrase: *Monteith Park Stormwater Project*



**Josafat Flores**  
Associate Civil Engineer  
[joflores@pw.lacounty.gov](mailto:joflores@pw.lacounty.gov)  
(626) 300-4621



**Louis Romero**  
Capital Projects Manager  
[loromero@pw.lacounty.gov](mailto:loromero@pw.lacounty.gov)  
(626) 300-3221